

SAFE RX LOCKING PRESCRIPTION VIALS (LPVS)

FREQUENTLY ASKED QUESTIONS



PRESCRIPTION OPIOID ABUSE – A NATIONAL HEALTH CRISIS

The CDC declared prescription drug abuse a national epidemic in 2011. Both the heroin and prescription drug abuse epidemics began with pilfering, taking a few pills at a time, from family medicine cabinets.

90%
OF ABUSERS
START IN
THEIR TEENS.

30,000
OPIOID OVERDOSE DEATHS
OCCURRED IN 2015, MORE THAN
GUN HOMICIDES AND AUTOMOBILE ACCIDENTS.

4 OF 5
HEROIN USERS
START WITH A
PRESCRIPTION OPIOID.

THE #1 SOURCE FOR TEEN PRESCRIPTION
DRUG ABUSE IS PILFERING FROM FAMILY MEDICINE CABINETS.



Why do Locking Prescription Vials (LPVs) exist?

- It has been over 45 years since the Poison Prevention Packaging Act of 1970 (PPPA) mandated child-resistant standards, generating a 45% reduction in child mortality.
- Since then, the Rx drug universe has expanded dramatically and today includes medications as addictive as heroin. We have been sending these prescriptions home to American families in containers that any six-year-old can readily open by PPPA standards.
- LPVs are a 45-year step forward in secure dispensing that will protect our children and teens and cut off the gateway to heroin.

Why does a veterinary practice need them?

- Pet medications are typically stored right on the kitchen counter easily accessible.
- Veterinarians prescribe controlled substances to help your pets with various conditions. Many of these medications are the same medications used by people. The opioid epidemic started with pilfering of controlled substances.
- Locking Prescription Vials (LPVs) are made from a stronger more durable plastic than the traditional prescription vials.

What are the most commonly prescribed medications that would be filled in a Locking Prescription Vial (LPV)?

- Tramadol
- Buprenex (Buprinorphone)
- Valium (Diazepam)
- Prozac (Fluoxetine)
- Proin (PPA or Phenylpropanolamine)
- Phenobarbitol

Not controlled, but could benefit from locking:

- DES (Diethylstilbestrol)
- Anything flavored (Rimadyl, Deramaxx, some thyroid tabs)

Can I reuse the LPV?

- LPVs are not reusable according to regulations, just like normal prescription vials.

Can I change the 4-digit PIN on my cap?

- You can add an additional PIN but you cannot RESET the PIN. Adding a PIN can only be done at your veterinarian's office.

Are Locking Prescription Vials (LPVs) recyclable?

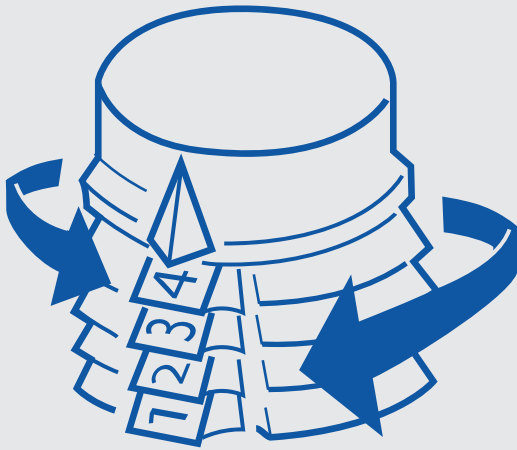
- Yes, LPVs are recyclable. However, they are not reusable according to regulations.

How do I use the LPV?

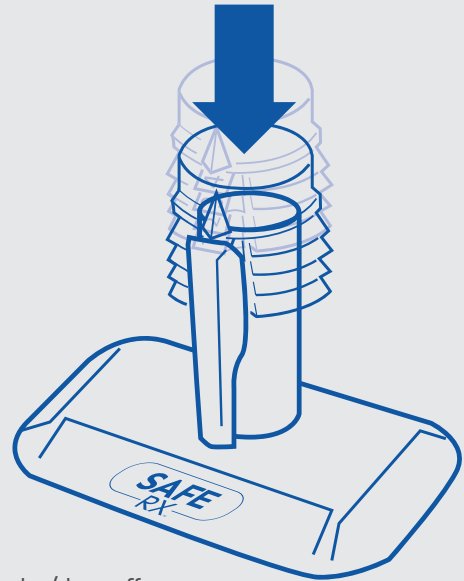
- Patient provides their veterinarian with their preferred 4-digit PIN on initial Rx order/drop-off.
- Veterinary staff encodes initial fill and can store PIN in your patient file for subsequent refills.
- Forgotten PIN can be sought from the veterinary office via a phone call with an authentication procedure, or obtained in a physical visit, based on the veterinary clinic's preference.

HOW THE FILL PROCESS WORKS:

1. Align numbers with arrows on the cap



2. Press cap firmly down on encoder



1. Customer provides the veterinary technician 4-digit PIN on initial prescription order/drop off.
2. PIN encoded during initial visit and stored in system for subsequent refills.
3. Forgotten PIN can be sought from the veterinary technician via a phone call with an authentication procedure or obtained in a physical visit, based on the clinic's or chain's preference.
4. The encoder can last up to 300 uses.

Product Ordering Information

- J1450 Safe Rx Intro Pack—40 LPVs and caps with two encoder devices.
- J1450b Safe Rx Bulk Pack—100 LPVs and caps with one encoder device.

